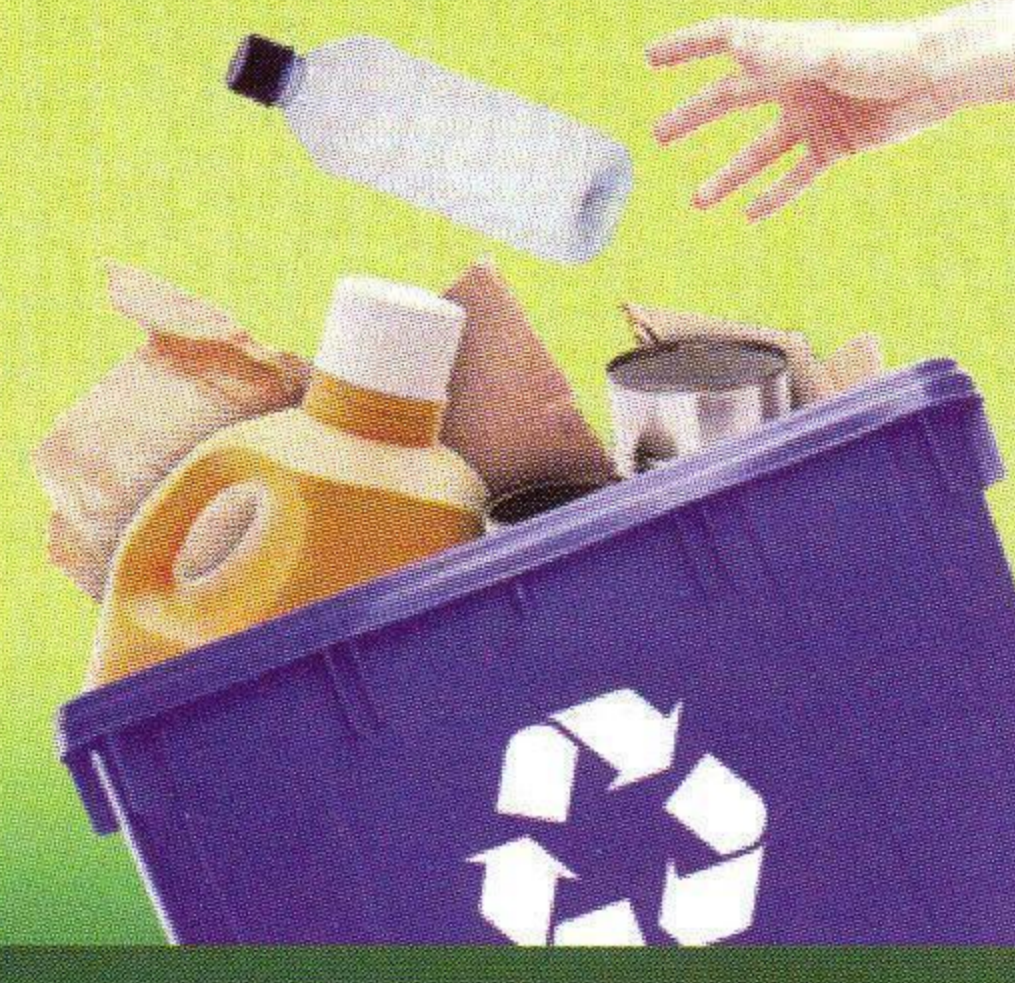




Put more in-the-bin!

AT HOME! AT WORK! AT SCHOOL!



We wish to thank you for doing your part to protect our environment. Your efforts truly do make a difference! Please follow these guidelines when gathering and preparing your materials for recycling.

ACCEPTABLE MATERIAL GUIDELINES

PLEASE Save these guidelines for future reference

PAPER	
 <p>Cardboard & Paper Bags Flatten cardboard & cut into pieces</p>	 <p>Junk Mail Envelopes, flyers, brochures, postcards etc.</p>
 <p>Paperboard No wax coated paperboard</p>	 <p>Newspaper Remove bags, strings and rubber bands</p>
 <p>Magazines & Catalogs All types & sizes</p>	 <p>Office Paper All types and sizes</p>
 <p>Phone Books All types and sizes</p>	

METAL
 <p>*Steel & Tin Cans Empty cans only</p>
 <p>*Aluminum Cans Empty cans only</p>
 <p>Kitchen Cookware Metal pots, pans, tins & utensils</p>

PLASTIC
 <p>*Plastic Jugs/Bottles (#1 & #2)</p>
 <p>*Household Plastic (#3 - #7) Empty containers only</p>
<p>REDUCE REUSE RECYCLE</p> 

RECYCLING BIN FULL?

That shouldn't stop you from Recycling!
Use additional bins, or plastic bags for your acceptable materials.



* Please rinse/clean containers before putting into recycling bin

UNACCEPTABLE ITEMS				
* Paper Milk or Juice Cartons (Wax Coated)	* Vinyl Siding	* Car Parts	* Medical Waste* (Syringes/Needles)	<p>*Please help protect our workers... WE DO NOT ACCEPT SYRINGES OR NEEDLES. </p>
* Styrofoam Container/Packing	* TV Cases	* Hangers	* Glass	
* Plastic Bags/Plastic Film	* Lawn Chairs	* PVC		
* Garden Hose/Rubber	* Large Toys	* Tarps/Pool Covers		

Environmental Services
6779 Smiths Creek Rd
Smiths Creek, MI 48074

(810) 989-6981